

FELLA Turboheuer

Ersatzteilliste

Instructions de Service et Liste des Pièces de Rechange

Operating Instructions and Spare Parts List

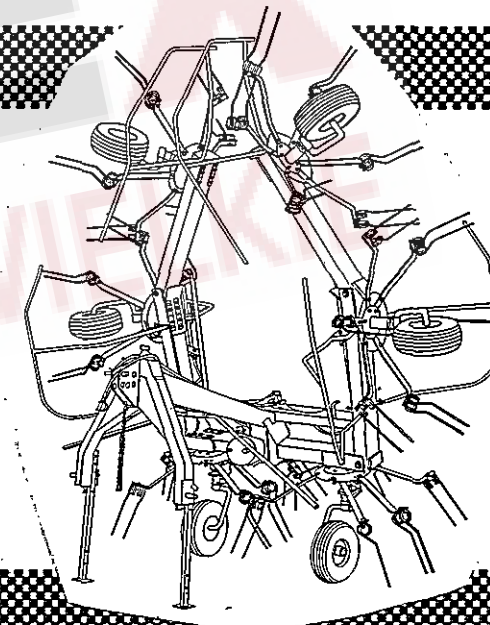
Istruzioni sull'uso e distina delle parti di ricambio

Gebruiksaanwijzing en Onderdeelenlist

Bruksanvisning och Reservdelslista

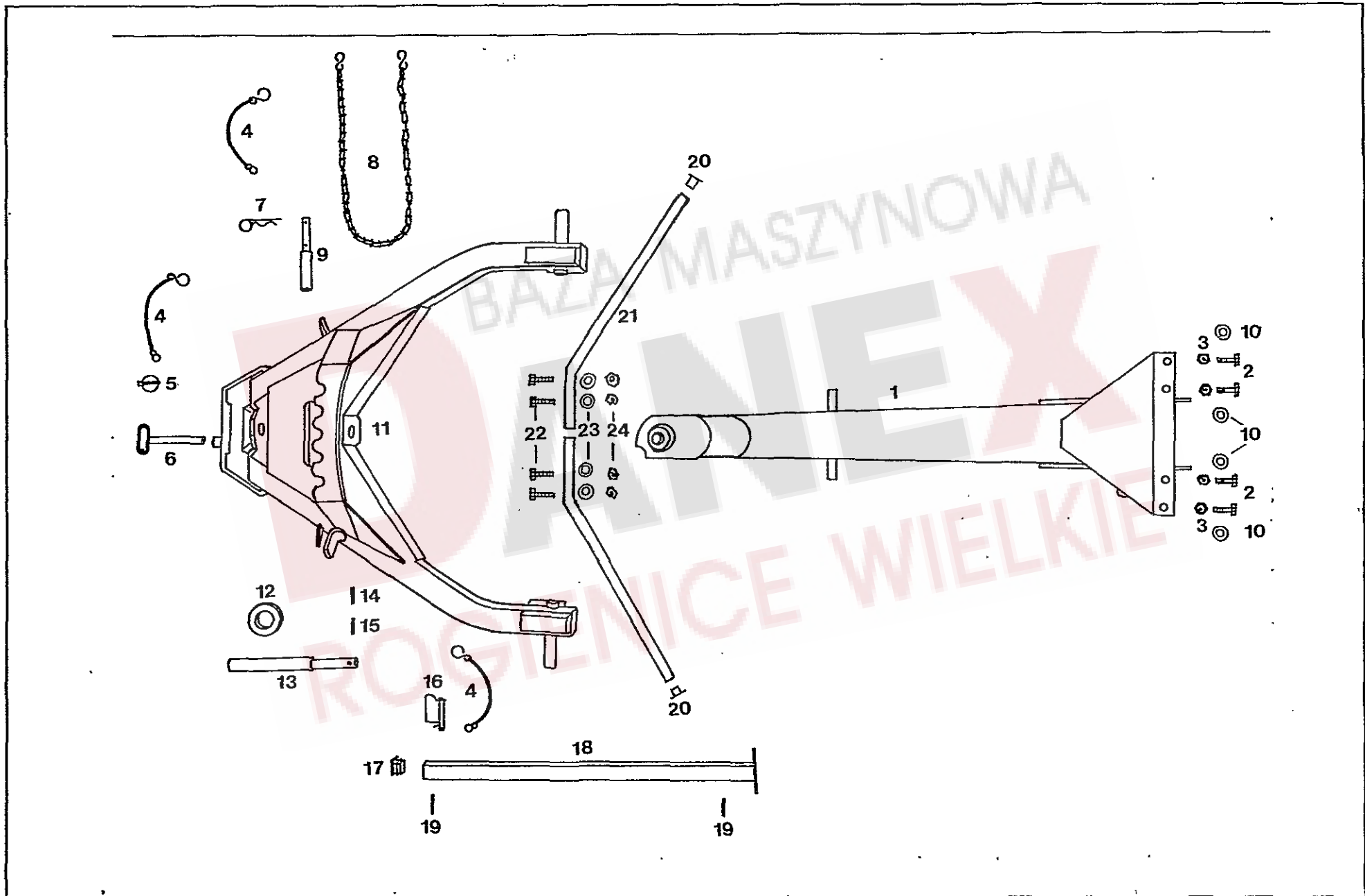


TH 660D Hydro



Ausgabe · Edition · Edition · Edizione · Uitgave · Utgava

03, 88

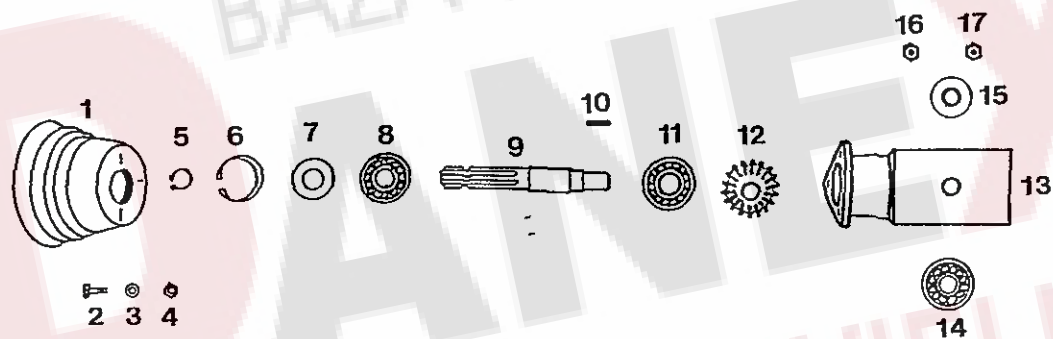


Ersatzteilliste

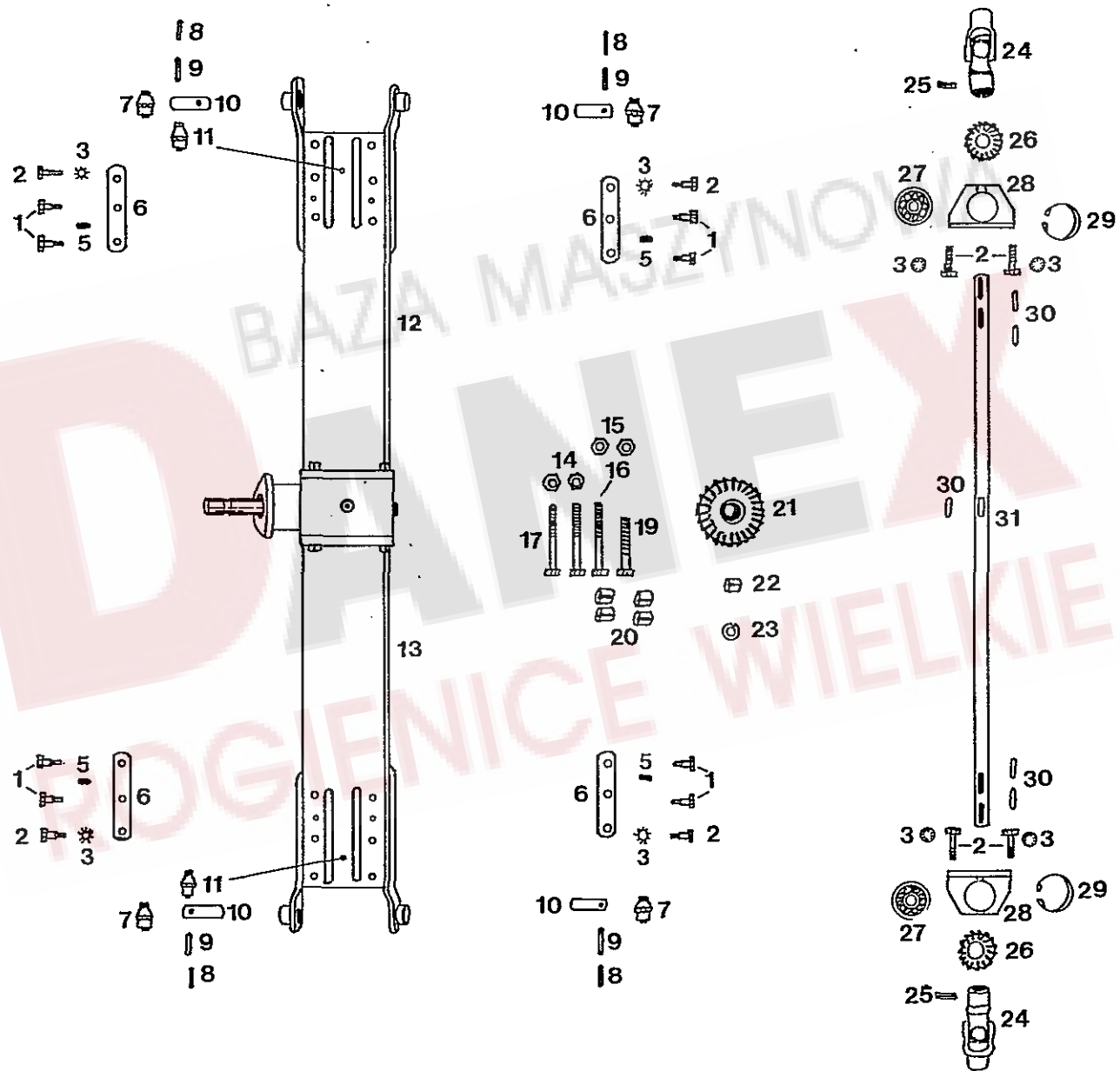
Tafel, Table, Plan, Tav.

1

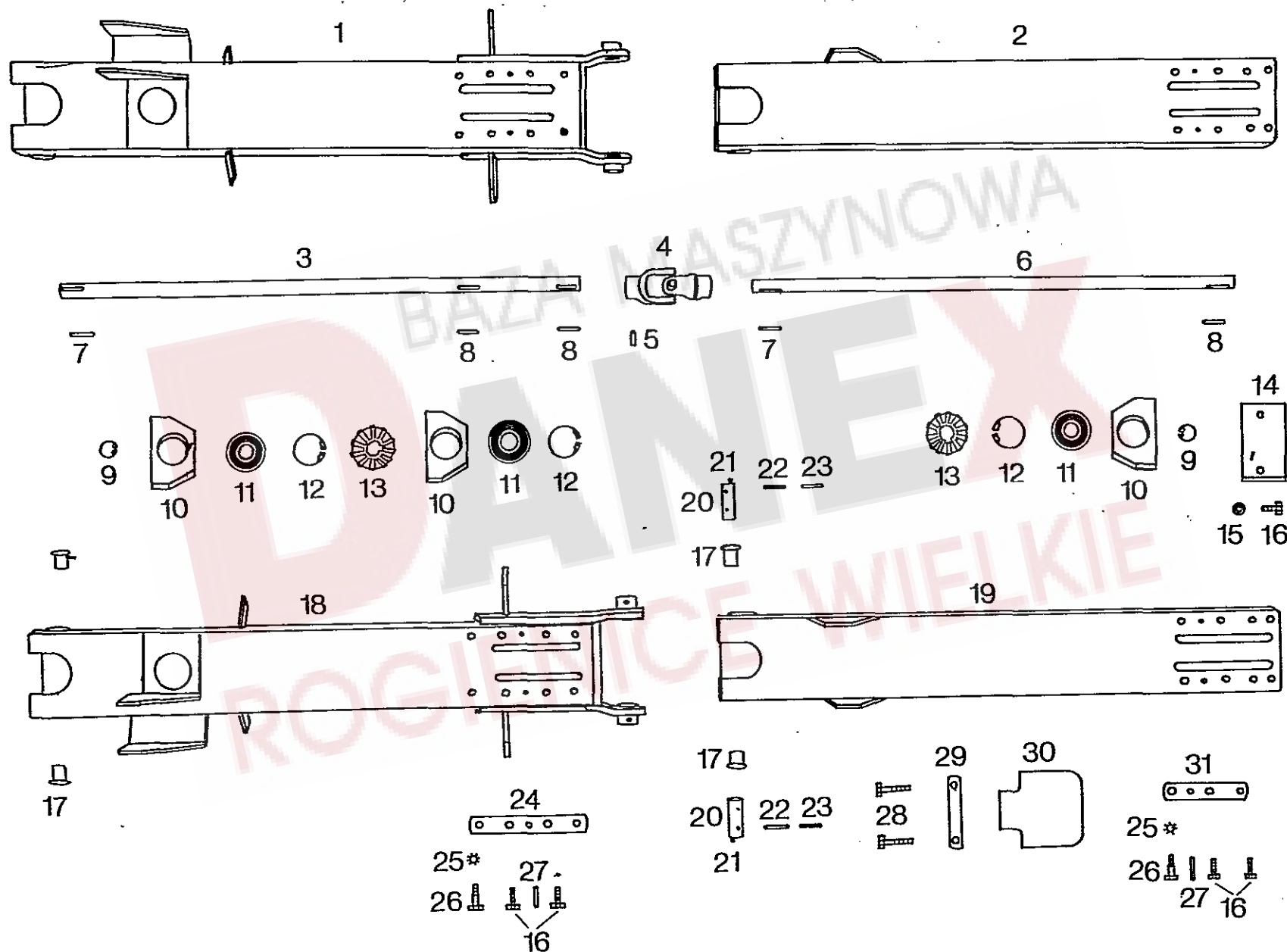
| Pos.Nr. Pos.no. Rep. Pos. no. | Bezeichnung des Teiles Description of the part Désignation de la pièce Descrizione del pezzo | X = Verschleißteil X = wear parts | X = pièces d'usure | Nr. No. No. No. | TH60DHY | | |
|--|---|--|---|--------------------------|---------|--|--|
| | Dreipunktbock mit Zubehör | 3-point headrack with accessories | Attelage trois points avec des accessoires | | | | |
| 1 | Verbindungsprofil, geschw. | Connecting profile, welded | Profil de connection, soudé | 488 393G | ● | | |
| 2 | 6kt.-Schraube M 12x90 DIN 931-8.8 A1A | Hexagonal bolt | Vis à 6 pans | 116 536 | ● | | |
| 3 | Sicherungsmutter M 12 DIN 6925-8 A1A | Retaining nut | Ecrou de maintien | 108 589 | ● | | |
| 4 | Sicherungsschnur | Retaining rope | Câble de maintien | 111 895 | X | | |
| 5 | Rohrklappsplint 6x30 | Cotter pin | Goupille fendue | 124 287 | X | | |
| 6 | Bolzen, geschw. | Welded pin | Goupille soudée | 487 429G | ● | | |
| 7 | Federstecker 5, DIN 11024 ZN 3 | Plug | Fiche | 115 916 | X | | |
| 8 | Knotenkette 2,8 DIN 5686-11 Glieder, 500 mm lang | Link chain (11 links) | Chaîne à joints (11 joints) | 117 244 | ● | | |
| 9 | Oberlenkerstufenbolzen 25x19x160 | Bolt of upper link assembly | Boulon gradué du bras de guidage | 124 295 | ● | | |
| 10 | Scheibe 13 DIN 125 ZN 3 | Washer | Rondelle | 105 186 | ● | | |
| 11 | Dreipunktbock, geschw. | 3-point headrack, welded | Attelage 3-points, soudé | 488 449 | ● | | |
| 12 | Rolle | Roll | Galet | 487 514 | ● | | |
| 13 | Bolzen | Bolt | Boulon | 487 482G | ● | | |
| 14 | Spannstift 5x40 DIN 1481 | Tension pin | Goupille | 107 441 | ● | | |
| 15 | Spannstift 8x40 DIN 1481 | Tension pin | Goupille | 107 465 | ● | | |
| 16 | Federsteckbolzen 12x55 | Clip-on bolt | Axe de réglage à ressort | 106 857 | X | | |
| 17 | Kunststoffkappe | Plastic hat | Chapeau plastique | 478 786 | ● | | |
| 18 | Stütze, geschw. | Support, welded | Support, soudé | 478 324G | ● | | |
| 19 | Spannstift 6x45 DIN 1481 | Tension pin | Goupille | 107 453 | ● | | |
| 20 | Verschlusskappe | Sealing hat | Chapeau de fermeture | 124 290 | ● | | |
| 21 | Schutzstrebe | Protection strut | Barre de protection | 488 474 | ● | | |
| 22 | 6kt.-Schraube M 8x40 DIN 931-8.8 A1A | Hexagonal bolt | Vis à 6 pans | 116 513 | ● | | |
| 23 | Scheibe 9 DIN 126 - ZN 3 | Plate | Rondelle | 115 991 | ● | | |
| 24 | Sicherungsmutter M 8 DIN 6925-8 A1A | Retaining nut | Ecrou de maintien | 108 531 | ● | | |



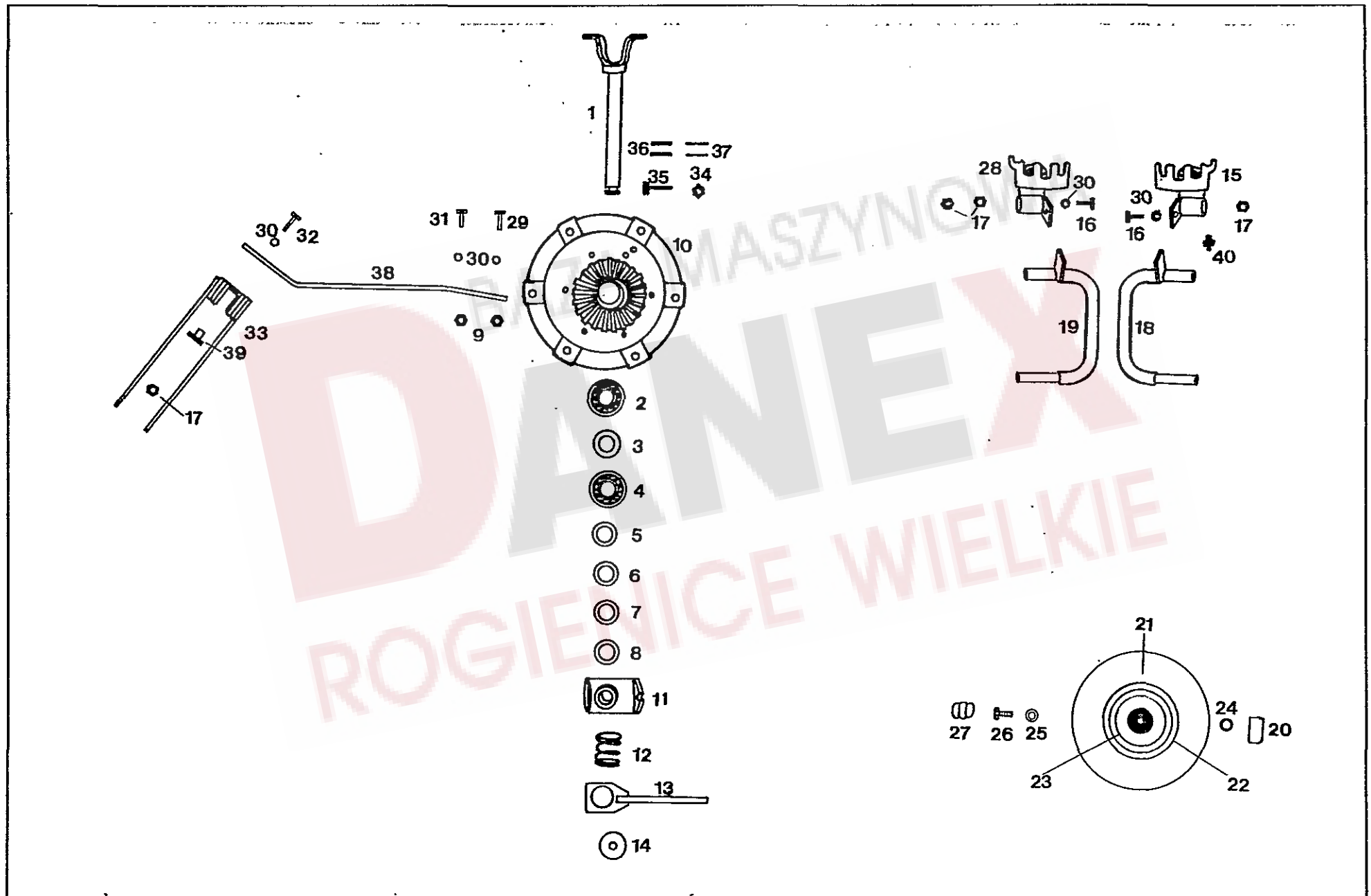
| Pos.Nr. Pos.no. Rep. Pos. no. | Bezeichnung des Teiles Description of the part Désignation de la pièce Descrizione del pezzo | | | Nr. No. No. No. | THS60DHY | | | |
|--|---|---------------------------|----------------------------------|--------------------------|----------|--|--|--|
| | Hauptgetriebe | Main gearbox | Engrenage principal | | | | | |
| 1 | Gelenkwellenschutz | P.t.o. guard | Protection de l'arbre de transm. | 486 050 | ● | | | |
| 2 | 6kt.-Schraube M 10x25 DIN 933-8.8 A1A | Hexagonal bolt | Vis à 6 pans | 116 622 | ● | | | |
| 3 | Scheibe 11 DIN 126 ZN 3 | Washer | Rondelle | 115 983 | ● | | | |
| 4 | Sicherungsmutter M 10 DIN 6925-8 A1A | Retaining nut | Ecrou de maintien | 108 441 | ● | | | |
| 5 | Sicherungsring 35x1,5 DIN 471 | Snap ring | Circlip extérieur | 107 367 | ● | | | |
| 6 | Sicherungsring 72x2,5 DIN 472 | Snap ring | Circlip intérieur | 107 385 | ● | | | |
| 7 | Paßscheibe 56x72x0,5 DIN 988 | Fitting plate | Rondelle de fixation | 126 369 | ● | | | |
| 7 | Paßscheibe 56x72x0,3 DIN 988 (bei Bedarf) | Fitting plate | Rondelle de fixation | 126 368 | ● | | | |
| 7 | Paßscheibe 56x72x0,1 DIN 988 (bei Bedarf) | Fitting plate | Rondelle de fixation | 124 914 | ● | | | |
| 8 | Rillenkugellager 6207 2RS DIN 625 | Grooved ball bearing | Roulement rainuré à billes | 124 758 | ● | | | |
| 9 | Kurze Getriebewelle | Short p.t.o.-shaft | Arbre d'entraînement court | 486 071 | ● | | | |
| 10 | Paßfeder A 8x7x36 DIN 6885 vergütet | Fitting spring | Ressort de fixation | 124 502 | ● | | | |
| 11 | Rillenkugellager 6206 Z DIN 625 | Grooved ball bearing | Roulement rainuré à billes | 109 455 | ● | | | |
| 12 | Kegelrad, klein Z=15 | Small bevel wheel | Pignon petit | 461 106 | ● | | | |
| 13 | Hauptgetriebe | Main gear | Engrenage principal | 487 473 | ● | | | |
| 14 | Rillenkugellager 6206 2RS DIN 625 | Grooved ball bearing | Roulement rainuré à billes | 124 757 | ● | | | |
| 15 | Radialdichtring AS 30x62x7 DIN 3760 | Radial seal | Bague | 107 047 | ● | | | |
| 16 | Verschlussschraube M 24x1,5 DIN 909-6 ZN 3 | Plug screw | Bouchon fileté | 107 104 | ● | | | |
| 17 | Entlüftungsverschlußschraube M 24x1,5 DIN 909-6 ZN 3 | Plug screw for air escape | Boulon fileté d'aération | 477 656 | ● | | | |



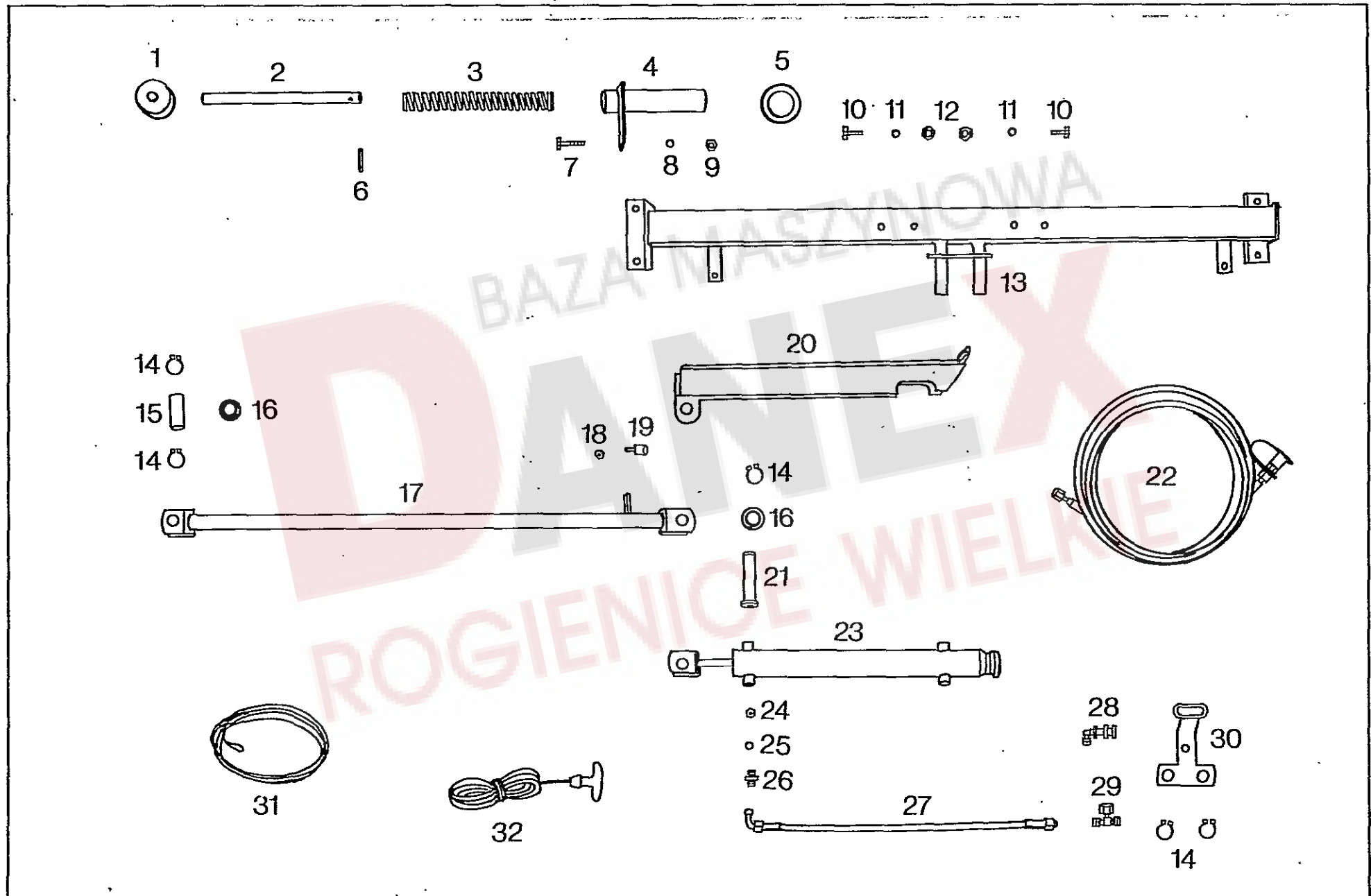
| Pos.Nr. Pos.no. Rep. Pos. no. | Bezeichnung des Teiles Description of the part Désignation de la pièce Descrizione del pezzo | * = kein Ersatzteil * = no spare part * = no pièces de rechange | Nr. No. No. No. | TH660DHy | | | |
|--|---|---|--------------------------------|----------|---|--|--|
| | Rahmen, innen | Inner frame | Chassis intérieur | | | | |
| 1 | 6kt.-Schraube M 12x25 DIN 933-8.8 A1A, verb.-plus | Hexagonal bolt | Vis à 6 pans | 124 505 | ● | | |
| 2 | Paßschraube M 12x50 DIN 7968-8.8 | Fitting screw | Vis de fixation | 126 022 | ● | | |
| 3 | Zahnscheibe 13,2 DIN 6797 ZN 3 | Toothed washer | Rondelle dentée | 105 524 | ● | | |
| 5 | Spannstift 8x30 DIN 1481 ZN 3 | Tension pin | Goupille | 108 745 | ● | | |
| 6 | Verstärkungsleiste | Reinforcement plate | Plaque de renforcement | | * | | |
| 7 | Kegelschmiernippel AM 6 DIN 71412 | Conical grease nipple | Graisser conique | 108 294 | ● | | |
| 8 | Spannhülse 5x40 DIN 1481 ZN 3 | Clamping sleeve | Douille de serrage | 107 441 | ● | | |
| 9 | Spannhülse 8x40 DIN 1481 ZN 3 | Clamping sleeve | Douille de serrage | 107 465 | ● | | |
| 10 | Scharnierbolzen | Hinge pin | Bouchon de charnière | 487 237 | ● | | |
| 11 | Kegelschmiernippel BM 8x1 DIN 71412 | Conical grease nipple | Graisser conique | 116 746 | ● | | |
| 12 | Rahmen, rechts, innen | Inner frame, right side | Châssis intérieur droit | 488 416 | ● | | |
| 13 | Rahmen, links, innen | Inner frame, left side | Châssis intérieur, gauche | 488 417 | ● | | |
| 14 | Sicherungsmutter M 16 DIN 6925-8 A1A | Retaining nut | Ecrou de maintien | 116 699 | ● | | |
| 15 | Sicherungsmutter M 14 DIN 6925-8 A1A | Retaining nut | Ecrou de maintien | 109 363 | ● | | |
| 16 | 6kt.-Schraube M 14x180 DIN 931-8.8 | Hexagonal bolt | Vis à 6 pans | 124 268 | ● | | |
| 17 | 6kt.-Schraube M 16x180 DIN 931-8.8 | Hexagonal bolt | Vis à 6 pans | 116 486 | ● | | |
| 19 | 6kt.-Schraube M 14x160 DIN 931-8.8 | Hexagonal bolt | Vis à 6 pans | 116 477 | ● | | |
| 20 | Spannstift 18x24 DIN 7346 | Tension pin | Goupille | 124 289 | ● | | |
| 21 | Großes Kegelarad Z=28 | Big bevel wheel | Pignon grand | 487 535 | ● | | |
| 22 | Distanzbuchse | Distance bush | Douille à distance | 121 387 | ● | | |
| 23 | Paßscheibe 30x42x0,5 DIN 988 | Fitting plate | Rondelle de fixation | 124 503 | ● | | |
| 24 | Kreuzgelenk W 2200 | Universal joint | Joint de cardan | 122 180 | ● | | |
| 25 | Gewindestift M 10x25 DIN 915-45H Verbus-plus | Threaded pin | Goupille filetée | 126 633 | ● | | |
| 26 | Kleines Kegelarad | Small bevel wheel | Pignon petit | 487 203 | ● | | |
| 27 | Rillenkugellager 6206 2RS DIN 625 | Grooved ball bearing | Roulement rainuré à billes | 124 757 | ● | | |
| 28 | Lagerbock | Bearing bracket | Support de palier | 487 548 | ● | | |
| 29 | Sicherungsring 62x2 DIN 472 | Snap ring | Circlip intérieur | 107 383 | ● | | |
| 30 | Paßfeder A 8x7x36 DIN 6885 vergütet | Fitting spring | Ressort de fixation | 124 502 | ● | | |
| 31 | Antriebswelle, innen | Inner p.t.o.-shaft | Arbre d'entraînement intérieur | 488 413 | ● | | |



| Pos.Nr. Pos.no. Rep. Pos. no. | Bezeichnung des Teiles Description of the part. Désignation de la pièce Descrizione del pezzo | * = kein Ersatzteil * = no spare part | * = no pièces de rechange | Nr. No. No. No. | TH660DH | | | |
|--|--|--|---------------------------------|--------------------------|---------|--|--|--|
| | Rahmen, außen | | Outer frame | | | | | |
| 1 | Rahmen, links, mitte | | Frame left, center | 488 419 | ● | | | |
| 2 | Rahmen, links, außen | | Outer frame, left | 488 446 | ● | | | |
| 3 | Antriebswelle, mitte | | Drive shaft, center | 488 414 | ● | | | |
| 4 | Walterscheid-Kreuzgelenk W 2200 | | Walterscheid-universal joint | 122 180 | ● | | | |
| 5 | Gewindestift M 10x25 DIN 915-45H, verb.-plus | | Threaded pin | 126 633 | ● | | | |
| 6 | Antriebswelle, außen | | Outer drive shaft | 488 415 | ● | | | |
| 7 | Paßfeder A 8x7x40 DIN 6885 C 45 K+V | | Fitting spring | 120 907 | ● | | | |
| 8 | Paßfeder A 8x7x36 DIN 6885 C 45 K+V | | Fitting spring | 124 502 | ● | | | |
| 9 | Sicherungsring 30x2 DIN 471 | | Snap ring | 124 504 | ● | | | |
| 10 | Lagerbock. | | Bearing bracket | 487 548 | ● | | | |
| 11 | Rillenkugellager 6206-2 RS DIN 625 | | Grooved ball bearing | 124 757 | ● | | | |
| 12 | Sicherungsring 62x2 DIN 472 | | Snap ring | 107 383 | ● | | | |
| 13 | Kegelrad Z=15 | | Bevel wheel | 487 203 | ● | | | |
| 14 | Deckel | | Cover | | * | | | |
| 15 | Scheibe 13 DIN 125 ZN 3 | | Washer | 105 186 | ● | | | |
| 16 | 6kt.-Schraube M 12x25 DIN 933-8.8 | | Hexagonal bolt | 124 505 | ● | | | |
| 17 | Buchse | | Bush | 120 778 | ● | | | |
| 18 | Rahmen, rechts, mitte | | Frame, right, center | 488 418 | ● | | | |
| 19 | Rahmen, rechts, außen | | Outer frame, right | 488 445 | ● | | | |
| 20 | Scharnierbolzen | | Hinge bolt | 487 237 | ● | | | |
| 21 | Kegelschmiernippel AM 6 DIN 71412 | | Conical grease nipple | 108 294 | ● | | | |
| 22 | Spannstift 8x40 DIN 1481 ZN 3 | | Tension pin | 107 465 | ● | | | |
| 23 | Spannstift 5x40 DIN 1481 ZN 3 | | Tension pin | 107 441 | ● | | | |
| 24 | Verstärkungsleiste | | Reinforcement strip | | * | | | |
| 25 | Zahnscheibe J 13,2 DIN 6797 ZN 3 | | Toothed washer | 105 524 | ● | | | |
| 26 | Paßscheibe M 12x40 DIN 7968-8.8 | | Fitting plate | 118 440 | ● | | | |
| 27 | Spannstift 8x30 DIN 1481 ZN 3 | | Tension pin | 108 745 | ● | | | |
| 28 | 6kt.-Schraube M 12x50 DIN 931-8.8 verb.-plus | | Hexagonal bolt | 126 647 | ● | | | |
| 29 | Halter | | Support | 488 397 | ● | | | |
| 30 | Abdeckung | | cover plate | 121 793 | ● | | | |
| 31 | Verstärkungsleiste | | Reinforcement strip | | * | | | |
| | | | Châssis extérieur | | | | | |
| | | | Châssis gauche, centre | | | | | |
| | | | Châssis gauche, extérieur | | | | | |
| | | | Arbre d'entraînement, centre | | | | | |
| | | | Walterscheid-joint de cardan | | | | | |
| | | | Bouchon fileté | | | | | |
| | | | Arbre d'entraînement, extérieur | | | | | |
| | | | Ressort de fixation | | | | | |
| | | | Ressort de fixation | | | | | |
| | | | Circlip extérieur | | | | | |
| | | | Support de palier | | | | | |
| | | | Roulement rainuré à billes | | | | | |
| | | | Circlip intérieur | | | | | |
| | | | Pignon | | | | | |
| | | | Couvercle | | | | | |
| | | | Rondelle | | | | | |
| | | | Vis à 6 pans | | | | | |
| | | | Douille | | | | | |
| | | | Châssis, droit, centre | | | | | |
| | | | Châssis, droit, extérieur | | | | | |
| | | | Axe de charnière | | | | | |
| | | | Graisser conique | | | | | |
| | | | Goupille | | | | | |
| | | | Goupille | | | | | |
| | | | Plaque de renforcement | | | | | |
| | | | rondelle dentée | | | | | |
| | | | Rondelle de fixation | | | | | |
| | | | Goupille | | | | | |
| | | | Vis à 6 pans | | | | | |
| | | | Support | | | | | |
| | | | Plaque de fermeture | | | | | |
| | | | Plaque de renforcement | | | | | |

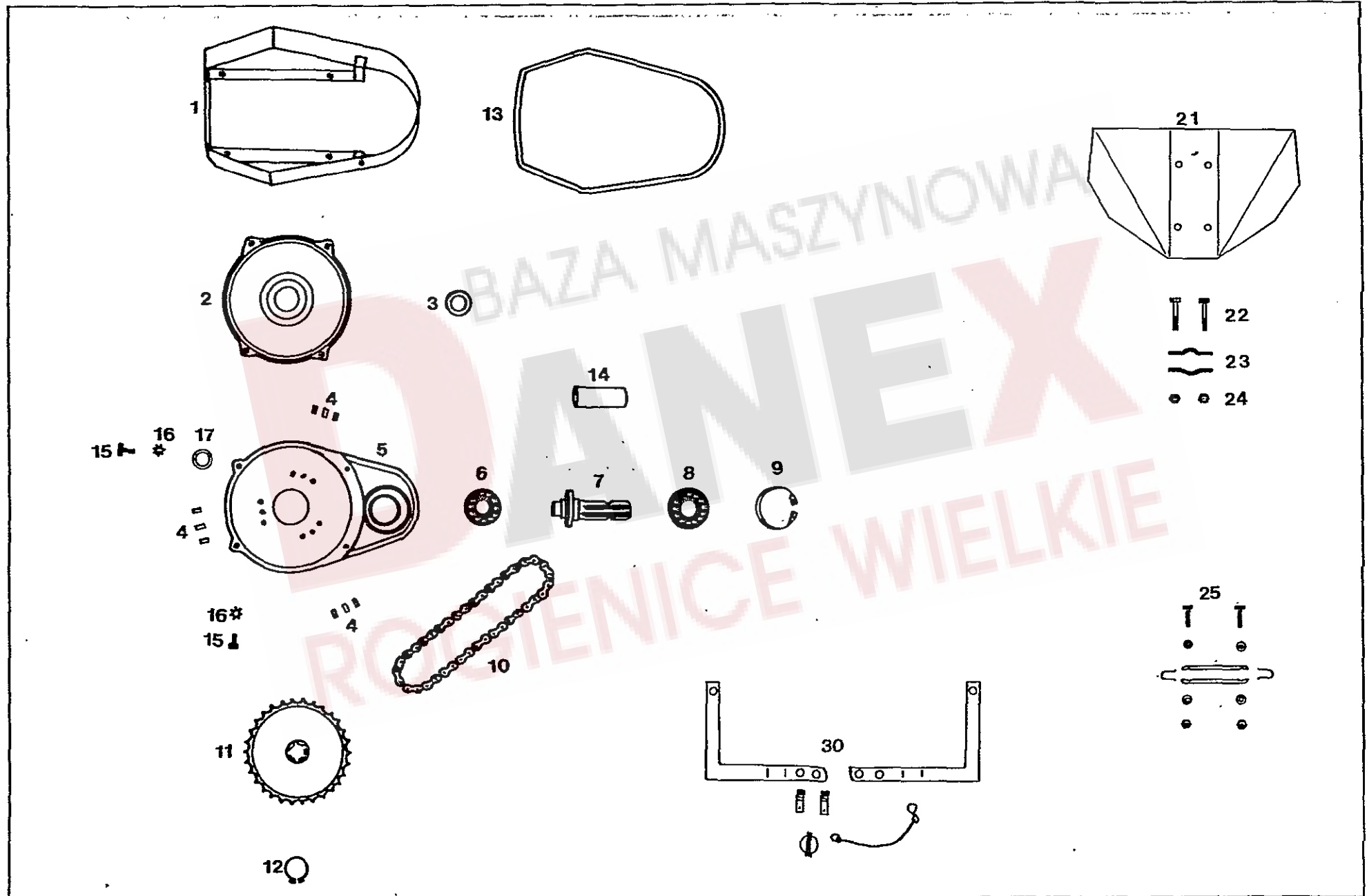


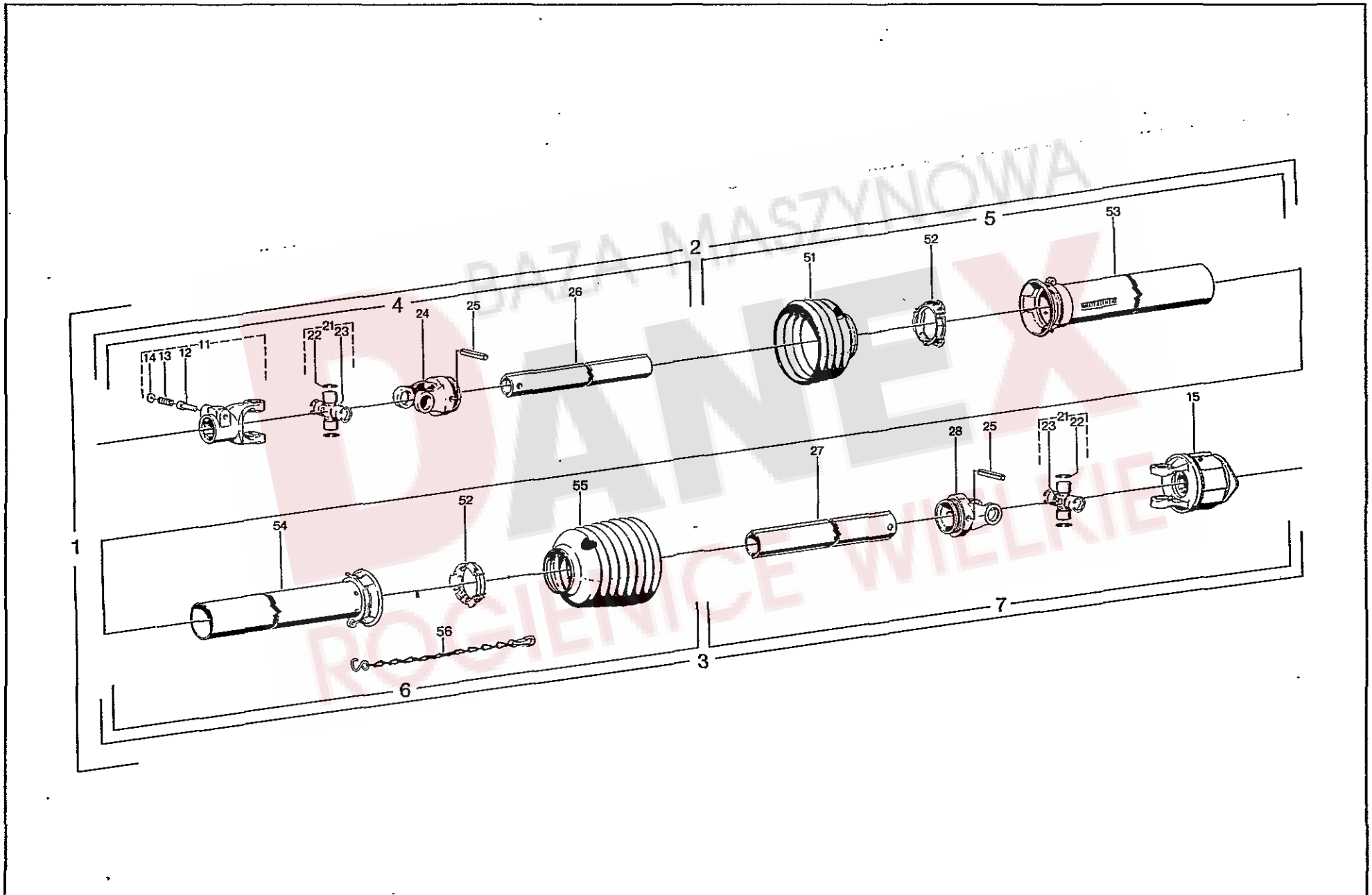
| Pos.Nr. Pos.no. Rep. Pos.no. | Bezeichnung des Teiles Description of the part Désignation de la pièce Descrizione del pezzo | X=Verschleißteil | X=weare parts | X=pièces d'usure | Nr. No. No. No. | TH660DH | | | |
|---------------------------------------|---|------------------|------------------------------------|---|--------------------------|---------|--|--|--|
| | Kreisel mit Laufradachse | | Rotor with track wheel axle | Plateau rotatif avec axe de roue | | | | | |
| 1 | Achse, geschw. | | Welded axle | Axe soudée | 487 481G | ● | | | |
| 2 | Rillenkugellager 6207 2RS DIN 625 | | Grooved ball bearing | Roulement rainuré à billes | 124 758 | ● | | | |
| 3 | Stützscheibe S 50x62 DIN 988 | | Support plate | Plaque de support | 124 330 | ● | | | |
| 4 | Rillenkugellager 6007 2RS DIN 625 | | Grooved ball bearing | Roulement rainuré à billes | 126 429 | ● | | | |
| 5 | Paßscheibe 35x45x1,0 DIN 988 ZN 3 | | Fitting plate | Roulement de fixation | 120 595 | ● | | | |
| 6 | Paßscheibe 35x45x0,5 DIN 988 (n. Bedarf) | | Fitting plate | Rondelle de fixation | 126 375 | ● | | | |
| 7 | Paßscheibe 35x45x0,2 DIN 988 (n. Bedarf) | | Fitting plate | Rondelle de fixation | 124 436 | ● | | | |
| 8 | Scheibe | | Washer | Rondelle | 487 461 | ● | | | |
| 9 | Sicherungsmutter M 12 DIN 6925-8 A1A | | Retaining nut | Ecrou de maintenance | 108 589 | ● | | | |
| 10 | Kreisel, geschw. | | Rotor, welded | Plateau rotatif, soudé | 487 479G | ● | | | |
| 11 | Raste | | Lock | Verrouillage | 487 464 | ● | | | |
| 12 | Druckfeder | | Compression spring | Ressort poussoir | 121 066 | ● | | | |
| 13 | Hebel, geschw. | | Welded handle | Manette soudée | 487 467G | ● | | | |
| 14 | Scheibe | | Washer | Rondelle | 482 084 | ● | | | |
| 15 | Segment, rechts | | Right segment | Sègment droit | 487 872 | ● | | | |
| 16 | 6kt.-Schraube M 12x30 DIN 933-10.9 A1A | | Hexagonal bolt | Vis à 6 pans | 117 848 | ● | | | |
| 17 | Sicherungsmutter M 12 DIN 6925-10 A1A | | Retaining nut | Ecrou de maintien | 124 710 | ● | | | |
| 18 | Laufachse, rechts | | Traversing axle, right side | Axe de roulement, droite | 488 331 | ● | | | |
| 19 | Laufachse, links | | Traversing axle, left side | Axe de roulement gauche | 488 332 | ● | | | |
| 20 | Schutzscheibe, hinten | | Protection plate, rear | Plaque de protection arrière | 488 456 | ● | | | |
| 21 | Decke 15x6.00-6 Impl. 4 PR T 510 | | Cover | Couvercle | 121 609 | X | | | |
| 22 | Schlauch 140-6 TR 13 | | Tyre | Roue | 121 610 | X | | | |
| 23 | Felge 4.50 Ax6 m. 2 Rillenkugellagern 6205 2RS | | Rim with 2 grooved ball bearing | Jante avec 2 roulement rainuré à billes | 121 608 | ● | | | |
| 24 | Scheibe | | Washer | Rondelle | 240 309 | ● | | | |
| 25 | Scheibe | | Washer | Rondelle | 464 006 | ● | | | |
| 26 | 6kt.-Schraube M 12x20 DIN 933-8.8 A1A verbus-plus | | Hexagonal bolt | Vis à 6 pans | 124 331 | ● | | | |
| 27 | Abschlußkappe | | Sealing cap | Chapeau de fermeture | 121 327 | ● | | | |
| 28 | Segment, links | | Left side segment | Sègment, gauche | 487 873 | ● | | | |
| 29 | 6kt.-Schraube M 12x40 DIN 933-8.8 A1A | | Hexagonal bolt | Vis à 6 pans | 116 630 | ● | | | |
| 30 | Scheibe 13 DIN 125 ZN 3 | | Washer | Rondelle | 105 186 | ● | | | |
| 31 | 6kt.-Schraube M 12x35 DIN 933-8.8 A1A | | Hexagonal bolt | Vis à 6 pans | 116 629 | ● | | | |
| 32 | Befestigungsschraube M 12x45, Gew. Länge 18 mm | | Screw | Vis | 121 170 | ● | | | |
| 33 | Federzinken 126 167 | | Spring tine | Dent flexible | 487 922 | X | | | |
| 34 | Sicherungsmutter M 8 DIN 6925-8 A1A | | Retaining nut | Ecrou de maintien | 108 531 | ● | | | |
| 35 | 6kt.-Schraube M 8x60 DIN 931-8.8 A1A | | Hexagonal bolt | Vis à 6 pans | 124 156 | ● | | | |
| 36 | Spannstift 8x50 DIN 1481 | | Tension pin | Goupille | 107 467 | ● | | | |
| 37 | Spannstift 5x50 DIN 1481 | | Tension pin | Goupille | 107 443 | ● | | | |
| 38 | Zinkenarm | | Tine arm | Bras de dent | 488 453 | X | | | |
| 39 | Unterlage | | Support | Support en haut | 487 380 | ● | | | |
| 40 | Kegelschmiernippel AM 8x1 DIN 71412 | | Conical grease nipple | Graisseur conique | 108 292 | ● | | | |



| Pos.Nr. Pos.no. Rep. Pos.no. | Bezeichnung des Teiles Description of the part Désignation de la pièce Descrizione del pezzo | X = Verschleißteil * = kein Ersatzteil | X = weare parts * = no spare part | X = pièces d'usure * = no pièces de rechange | Nr. No. No. No. | TH60DHY | | | |
|---------------------------------------|---|---|--------------------------------------|---|--------------------------|---------|--|--|--|
| | Hydraulik | | Hydraulic | Hydraulique | | | | | |
| 1 | Gummimetall-Anschlagpuffer | | Bumper | Tampon | 122 205 | ● | | | |
| 2 | Federbolzen | | Clip-on bolt | Axe de réglage à ressort | 488 376 | ● | | | |
| 3 | Druckfeder | | Compression spring | Ressort de pression | 122 182 | ● | | | |
| 4 | Federrohr | | Pipe | Tube | 488 375 | ● | | | |
| 5 | Scheibe | | Washer | Rondelle | 491 042 | ● | | | |
| 6 | Spannstift 6x36 DIN 1481 ZN 3 | | Tension pin | Goupille | 107 451 | ● | | | |
| 7 | 6kt.-Schraube M 10x35 DIN 933-8.8 A1A | | Hexagonal bolt | Vis à 6 pans | 116 623 | ● | | | |
| 8 | Scheibe 11 DIN 126 ZN 3 | | Washer | Rondelle | 115 983 | ● | | | |
| 9 | Sicherungsmutter M 10 DIN 6925-8 A1A | | Retaining nut | Ecrou de maintien | 108 441 | ● | | | |
| 10 | 6kt.-Schraube M 12x30 DIN 933-8.8 A1A | | Hexagonal bolt | Vis à 6 pans | 116 628 | ● | | | |
| 11 | Scheibe 13 DIN 125 ZN 3 | | Washer | Rondelle | 105 186 | ● | | | |
| 12 | Sicherungsmutter M 12 DIN 6925-8 A1A | | Retaining nut | Ecrou de maintien | 108 589 | ● | | | |
| 13 | Träger | | Support | Support | 488 401 | ● | | | |
| 14 | Sicherungsring 25x2 DIN 471 ZN 3 | | Snap ring | Circlip extérieur | 126 653 | ● | | | |
| 15 | Bolzen | | Bolt | Boulon | 122 196 | ● | | | |
| 16 | Scheibe 26 DIN 126 ZN 3 | | Washer | Rondelle | 115 989 | ● | | | |
| 17 | Verbindungsrohr | | Connection pipe | Tube de connection | 488 388 | ● | | | |
| 18 | 6kt.-Mutter M 8 DIN 934-8 A1A | | Hexagonal nut | Ecrou à 6 pans | 116 684 | ● | | | |
| 19 | Anschlagpuffer | | Bumper | Tampon | 416 309 | ● | | | |
| 20 | Rastprofil | | Locking profile | Profil de verrouillage | 488 400 | ● | | | |
| 21 | Bolzen | | Bolt | Boulon | 488 382 | ● | | | |
| 22 | Hydraulik-Schlauchleitung 2500 mm | | Hydraulic hose line | Conduite en tuyaux hydraulique | 121 788 | X | | | |
| 23 | Hydraulik-Zylinder | | Hydraulic cylinder | Vérin hydraulique | 122 150 | ● | | | |
| 24 | Drossel | | Stop | Arrêt | 487 677 | ● | | | |
| 25 | Runddichtring 10x2 DIN 3770-NB70 | | Round seal | Bague ronde | 126 038 | ● | | | |
| 26 | Gerade Verschraubung | | Straight screw | Vis, plat | 121 798 | ● | | | |
| 27 | Hydraulikschlauchleitung 600 mm | | Hydraulic hose line | Conduite en tuyaux hydraulique | 121 787 | X | | | |
| 28 | Winkel-Schottverschraubung | | Threaded pipe angle | Raccordement à vis coudé | 121 800 | ● | | | |
| 29 | Einstellbare T-Verschraubung | | Adjustable bolting | Vissage réglable | 121 799 | ● | | | |
| 30 | Seilführung | | Bracket | Guide | 488 395 | ● | | | |
| 31 | Zugseil Ø 6 Länge: 1850 mm | | Pulling rope | Câble tracteur | 122 150 | * | | | |
| 32 | Zugseil Ø 4 Länge: 5000 mm | | Pulling rope | Câble tracteur | 121 054 | * | | | |
| 33 | Knebelgriff | | Handle | Manette de flèche | 120 957 | ● | | | |

| Pos.Nr. Pos.no. Rep. Pos. no. | Bezeichnung des Teiles Description of the part. Désignation de la pièce Descrizione del pezzo | X = Verschleißteil | X = weare parts | X = pieces d'usure | Nr. No. No. No. | TH660DHY | | | |
|--|--|--------------------|-------------------------|--|--------------------------|----------|--|--|--|
| | Schutzvorrichtung | | Protective guard | Dispositiv de protection | | | | | |
| 1 | Schutzbogen, links, außen | | Outer guard, left | Pièce de protection, gauche, extérieur | 488 426 | X | | | |
| 2 | Schutzbogen, rechts, außen | | Outer guard, right | Pièce de protection, droit, extérieur | 488 427 | X | | | |
| 3 | Schutzbogen, innen | | Inner guard | Pièce de protection, intérieur | 488 436 | X | | | |
| 4 | Schutzbogen, innen | | Inner guard | Pièce de protection, intérieur | 488 435 | X | | | |
| 5 | 6kt.-Schraube M 12x20 DIN 933-8.8 A1A, verb.-plus | | Hexagonal bolt | Vis à 6 pans | 124 331 | ● | | | |
| 6 | Scheibe 13 DIN 125 ZN 3 | | Wascher | Rondelle | 105 186 | ● | | | |
| 7 | Spannstift 4x20 DIN 1481 ZN 3 | | Tension pin | Goupille | 115 945 | ● | | | |
| 8 | Druckfeder | | Compression spring | Ressort de pression | 120 777 | ● | | | |
| 9 | Druckknopf | | Compression piece | Pièce de pression | 122 211 | ● | | | |
| 10 | Griff | | Handle | Manche | 488 354 | ● | | | |
| 11 | Sicherungsmutter M 12 DIN 6925-8 A1A | | Retaining nut | Ecrou de maintien | 108 589 | ● | | | |
| 12 | Tellerfeder 28x12,2x1 ZN 3 | | Spring | Ressort | 107 096 | ● | | | |
| 13 | Scheibe | | Washer | Rondelle | 464 006 | ● | | | |
| 14 | 6kt.-Schraube M 12x50 DIN 931-8.8 A1A | | Hexagonal bolt | Vis à 6 pans | 116 530 | ● | | | |
| 15 | 6kt.-Schraube M 12x30 DIN 933-8.8 A1A | | Hexagonal bolt | Vis à 6 pans | 116 628 | ● | | | |





| Pos.Nr. Pos.no. Rep. Pos.no. | Bezeichnung des Teiles Description of the part. Désignation de la pièce Descrizione del pezzo | | | Nr. No. No. No. | TH6600Hy | | | |
|---------------------------------------|--|---|--|------------------------------|----------|--|--|--|
| | Gelenkwelle W 2200-SC 15-K 33 B-008/011 | P.t.o.-shaft | Arbre de transmission | FELLA 121 032 | • | | | |
| | | | | Walter- scheid 343 399 | • | | | |
| 1 | Gelenkwelle mit Schutz | P.t.o. drive shaft with guard | Transmission avec protecteur | | • | | | |
| 2 | Innere Gelenkwellenhälfte mit äußerer Schutzhälfte WH 2200-SC14 | Inner p.t.o.-half with outer guard half WH 2200-SC14 | Demi arbre de transm. intérieur avec demi protecteur extérieur | 323 320 | • | | | |
| 3 | Äußere Gelenkwellenhälfte mit innerer Schutzhälfte -WH 2200-SC14-K33 | Outer p.t.o.-half with inner guard half | Demi arbre de transm. extérieur avec demi protecteur intérieur | 343 400 | • | | | |
| 4 | Innere Gelenkwellenhälfte WH 2200 | Inner p.t.o.-half | Demi arbre de transm. intérieur | 085 670 | • | | | |
| 5 | Äußere Schutzhälfte SCH14 | Outer guard half | Demi protecteur extérieur | 337 406 | • | | | |
| 6 | Innere Schutzhälfte SCH14 | Inner guard half | Demi protecteur intérieur | 351 540 | • | | | |
| 7 | Äußere Gelenkwellenhälfte WH 2200-K33 | Outer p.t.o.-half | Demi arbre de transm. extérieur | 343 401 | • | | | |
| 11 | Aufsteckgabel, kompl. AG 2200-1 3/8"(6) | Quick disconnect yoke, cpl. | Mâchoire à verrouillage rapide | 041 049 | • | | | |
| 12 | Schiebestift | Quick-disconnect pin, cpl. | Poussoir de verrouillage rapide | 087 245 | • | | | |
| 13 | Druckfeder | Compression spring | Ressort de pression | 087 246 | • | | | |
| 14 | Scheibe | Washer | Rondelle | 087 247 | • | | | |
| 15 | Sternratsche, kompl. K33-R2200-1 3/8"(6) M=800±35Nm | Star ratchet clutch cpl. | Limiteur à cames en étoile, cpl. | 050 097 | • | | | |
| 21 | Kreuzgarnitur, kompl. | Unit package, cpl. | Bloc croisillon, cpl. | 044 439 | • | | | |
| 22 | Sicherungsring 24x1,5 DIN 984 | Snap ring | Bague de maintien | 020 711 | • | | | |
| 23 | Kegelschmiernippel BM 8x1 DIN 71412 | Conical grease nipple | Graisseur conique | 020 674 | • | | | |
| 24 | Rillengabel RG2200 Ov | Grooved fork | Mâchoire à gorge | 041 065 | • | | | |
| 25 | Spannstift 10x65 DIN 1481 | Tension pin | Goupille | 020 614 | • | | | |
| 26 | Profilrohr Ov; L=1200 | Profile tube | Tube profilé | 046 596 | • | | | |
| 27 | Profilrohr I; L=1195 | Profile tube | Tube profilé | 022 484 | • | | | |
| 28 | Rillengabel RG 2200-1 | Grooved fork | Mâchoire à gorge | 041 068 | • | | | |
| 51 | Schutztrichter | Guard cone | Cône protecteur | 090 183 | • | | | |
| 52 | Gleitring | Slide ring | Glissoir | 087 279 | • | | | |
| 53 | Außenschutzrohr mit Kappe L=740 | Outer protection tube with hat | Tube de protection extérieure | 057 538 | • | | | |
| 54 | Innenschutzrohr mit Kappe L=740 | Inner protection tube with hat | Tube de protection intérieure | 057 537 | • | | | |
| 55 | Schutztrichter | Guard cone | Cône protecteur | 090 195 | • | | | |
| 56 | Haltekette | Safety chain | Chaînette | 044 321 | • | | | |
| | Ersatzteile können nur über die Firma Walterscheid bezogen werden! | Spare parts can only be purchased directly from the Walterscheid company! | Les pièces peuvent seulement être achetées de chez la maison Walterscheid! | | | | | |

Ersatzteilliste

NUMMERNVERZEICHNIS

INDEX OF NUMBERS

LIST NUMERIQUE

INDICE PER NUMERI

| Bestell-Nr. Part no No de commande No d'ordinazione | Tafel Table Tableau Tavola | Pos.-Nr. Pos.-no No de pos. Pos. No | Bestell-Nr. Part no No de commande No d'ordinazione | Tafel Table Tableau Tavola | Pos.-Nr. Pos.-no No de pos. Pos. No | Bestell-Nr. Part no No de commande No d'ordinazione | Tafel Table Tableau Tavola | Pos.-Nr. Pos.-no No de pos. Pos. No | Bestell-Nr. Part no No de commande No d'ordinazione | Tafel Table Tableau Tavola | Pos.-Nr. Pos.-no no de pos. Pos. No |
|--|-------------------------------------|--|--|-------------------------------------|--|--|-------------------------------------|--|--|-------------------------------------|--|
| 105 186 | 1.10 | 4.15 | 5.30 | 6.11 | | 116 622 | 2.02 | | 124 295 | 1.09 | |
| | 7.06 | | | | | 116 623 | 6.07 | | 124 330 | 5.03 | |
| 105 327 | 8.06 | | | | | 116 628 | 6.10 | 7.15 | 124 331 | 5.26 | 7.05 |
| 105 524 | 3.03 | 4.25 | | | | 116 629 | 5.31 | | 124 436 | 5.07 | |
| 106 857 | 1.16 | | | | | 116 630 | 5.29 | | 124 502 | 2.10 | 3.30 4.08 |
| 107 047 | 2.15 | | | | | 116 684 | 6.18 | | 124 503 | 3.23 | |
| 107 096 | 7.12 | | | | | 116 699 | 3.14 | | 124 504 | 4.09 | |
| 107 367 | 2.05 | 8.12 | | | | 116 746 | 3.11 | | 124 505 | 3.01 | 4.16 |
| 107 383 | 3.29 | 4.12 | | | | 117 244 | 1.08 | | 124 710 | 5.17 | |
| 107 385 | 2.06 | 8.09 | | | | 117 848 | 5.16 | | 124 757 | 2.14 | 3.27 4.11 |
| 107 441 | 1.14 | 3.08 | 4.23 | | | 118 440 | 4.26 | | 124 758 | 2.08 | 5.02 |
| 107 443 | 5.37 | | | | | 120 595 | 5.05 | | 124 914 | 2.07 | |
| 107 451 | 6.06 | | | | | 120 777 | 7.08 | | 126 022 | 3.02 | |
| 107 453 | 1.19 | | | | | 120 778 | 4.17 | | 126 038 | 6.25 | |
| 107 465 | 1.15 | 3.09 | 4.22 | | | 120 907 | 4.07 | | 126 368 | 2.07 | |
| 107 467 | 5.36 | | | | | 120 957 | 6.33 | | 126 369 | 2.07 | |
| 107 727 | 8.15 | | | | | 121 066 | 5.12 | | 126 375 | 5.06 | |
| 108 292 | 5.40 | | | | | 121 170 | 5.32 | | 126 429 | 5.04 | |
| 108 294 | 3.07 | 4.21 | | | | 121 327 | 5.27 | | 126 633 | 3.25 | 4.05 |
| 108 441 | 2.04 | 6.09 | | | | 121 387 | 3.22 | | 126 647 | 4.28 | |
| 108 531 | 1.24 | 5.34 | 8.24 | | | 121 608 | 5.23 | | 126 653 | 6.14 | |
| 108 570 | 8.08 | | | | | 121 609 | 5.21 | | 240 309 | 5.24 | |
| 108 589 | 1.03 | 5.09 | 6.12 | 7.11 | | 121 610 | 5.22 | | 416 309 | 6.19 | |
| 108 606 | 8.03 | | | | | 121 787 | 6.27 | | 461 106 | 2.12 | |
| 108 745 | 3.05 | 4.27 | | | | 121 788 | 6.22 | | 464 006 | 5.25 | 7.13 |
| 109 205 | 8.04 | | | | | 121 793 | 4.30 | | 477 656 | 2.17 | |
| 109 363 | 3.15 | | | | | 121 798 | 6.26 | | 478 324 | 1.18 | |
| 109 455 | 2.11 | | | | | 121 799 | 6.29 | | 478 786 | 1.17 | |
| 111 895 | 1.04 | | | | | 121 800 | 6.28 | | 482 084 | 5.14 | |
| 115 916 | 1.07 | | | | | 122 150 | 6.23 | | 486 050 | 2.01 | |
| 115 945 | 7.07 | | | | | 122 180 | 3.24 | 4.04 | 486 071 | 2.09 | |
| 115 972 | 8.17 | | | | | 122 182 | 6.03 | | 486 103 | 8.07 | |
| 115 983 | 2.03 | 6.08 | | | | 122 196 | 6.15 | | 486 107 | 8.11 | |
| 115 989 | 6.16 | | | | | 122 205 | 6.01 | | 486 113 | 8.02 | |
| 115 991 | 1.23 | | | | | 122 211 | 7.09 | | 486 178 | 8.10 | |
| 116 049 | 8.16 | | | | | 124 156 | 5.35 | | 487 203 | 3.26 | 4.13 |
| 116 477 | 3.19 | | | | | 124 268 | 3.16 | | 487 237 | 3.10 | 4.20 |
| 116 486 | 3.17 | | | | | 124 287 | 1.05 | | 487 380 | 5.39 | |
| 116 513 | 1.22 | 8.22 | | | | 124 289 | 3.20 | | 487 429 | 1.06 | |
| 116 530 | 7.14 | | | | | 124 290 | 1.20 | | 487 442 | 8.01 | |
| 116 536 | 1.02 | | | | | 124 292 | 8.14 | | 487 461 | 5.08 | |
| | | | | | | | | | 487 464 | 5.11 | |
| | | | | | | | | | 487 467 | 5.13 | |
| | | | | | | | | | 487 473 | 2.13 | |
| | | | | | | | | | 487 479 | 5.10 | |
| | | | | | | | | | 487 481 | 5.01 | |
| | | | | | | | | | 487 482 | 1.13 | |
| | | | | | | | | | 487 514 | 1.12 | |
| | | | | | | | | | 487 535 | 3.21 | |
| | | | | | | | | | 487 548 | 3.28 | 4.10 |
| | | | | | | | | | 487 637 | 8.00 | |
| | | | | | | | | | 487 639 | 8.05 | |
| | | | | | | | | | 487 641 | 8.13 | |
| | | | | | | | | | 487 662 | 8.23 | |
| | | | | | | | | | 487 663 | 8.21 | |
| | | | | | | | | | 487 665 | 8.00 | |
| | | | | | | | | | 487 677 | 6.24 | |
| | | | | | | | | | 487 872 | 5.15 | |
| | | | | | | | | | 487 873 | 5.28 | |
| | | | | | | | | | 487 922 | 5.33 | |
| | | | | | | | | | 488 320 | 8.25 | |
| | | | | | | | | | 488 331 | 5.18 | |
| | | | | | | | | | 488 332 | 5.19 | |
| | | | | | | | | | 488 354 | 7.10 | |
| | | | | | | | | | 488 375 | 6.04 | |
| | | | | | | | | | 488 376 | 6.02 | |
| | | | | | | | | | 488 382 | 6.21 | |
| | | | | | | | | | 488 388 | 6.17 | |
| | | | | | | | | | 488 393 | 1.01 | |
| | | | | | | | | | 488 395 | 6.30 | |
| | | | | | | | | | 488 397 | 4.29 | |
| | | | | | | | | | 488 400 | 6.20 | |
| | | | | | | | | | 488 401 | 6.13 | |
| | | | | | | | | | 488 413 | 3.31 | |
| | | | | | | | | | 488 414 | 4.03 | |
| | | | | | | | | | 488 415 | 4.06 | |
| | | | | | | | | | 488 416 | 3.12 | |
| | | | | | | | | | 488 417 | 3.13 | |

